

407 Crumlin Road , Belfast, BT14 7FY

Offers Around £94,950

Magnificent Modern Built Ground Floor Self Contained Apartment With Off Street Carparking

Holding a walled private corner site with small garden and walk round path, this superb purpose-built ground floor apartment is set within this most popular section of the Crumlin Road. The spacious recently re-modelled interior comprises 2 bedrooms, lounge with open plan newly fitted kitchen with dining area and bathroom in classic white suite. The dwelling further offers uPvc double glazed windows and benefits from extensive use of wood laminate and ceramic floor coverings. Private gardens and off street car parking combines with the most convenient location within a minutes' walk from churches, public transports and excellent local shopping.

Immediate inspection strongly recommended.

Energy Efficiency Rating		Current	Potential
Very energy efficient - lower running costs			
(92 plus)	A		
(81-91)	B		
(69-80)	C		
(55-68)	D		
(39-54)	E		
(21-38)	F		
(1-20)	G		
Not energy efficient - higher running costs			
Northern Ireland		61	71
EU Directive 2002/91/EC			

407 Crumlin Road

, Belfast, BT14 7FY



- Modern Constructed Ground Floor Apartment
- 2 Bedrooms
- Spacious Lounge
- Wired For Economy 7 Heating
- Upvc Double Glazed Windows
- Classic White Bathroom
- Newly Fitted Kitchen
- Off Street Parking
- Most Convenient Location

Entrance Hall

Upvc double glazed entrance door, point for economy 7 central heating, hot press/copper cylinder, ceramic tiled floor, storage cupboard.

Lounge

14'4" x 11'10" (4.37 x 3.63)
Wood laminate floor

Kitchen

11'0" x 9'6" (3.36 x 2.92)
Single drainer stainless steel sink unit, range of high and low level units, formica worktops, cooker space, integrated

extractor fan, plumbed for washing machine, under fridge space, partly tiled wall, ceramic tiled floor.

Rear lobby, ceramic tiled floor.

Dining Area

Wood laminate floor.

Bathroom

White suite comprising panelled bath, vanity unit, low flush wc, wall mounted electric heater, ceramic tiled floor.

Bedroom

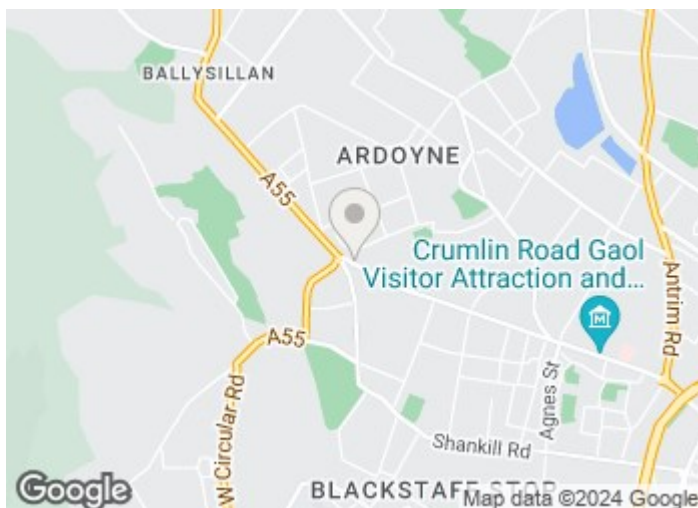
10'4" x 7'11" (3.17 x 2.43)
Wood laminate floor.

Bedroom

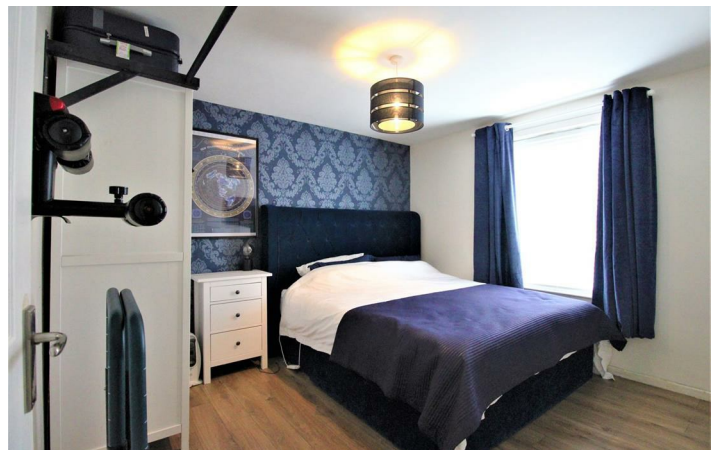
11'6" x 10'5" (3.53 x 3.20)
Wood laminate floor .

Outside

Walled garden front and side , communal rear garden
Drive way in brick paving off street car parking.

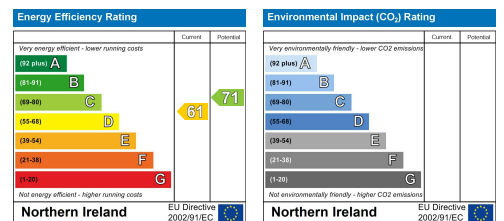


Directions



Floor Plan

These particulars, whilst believed to be accurate are set out as a general outline only for guidance and do not constitute any part of an offer or contract. Intending purchasers should not rely on them as statements of representation of fact, but must satisfy themselves by inspection or otherwise as to their accuracy. No person in this firm's employment has the authority to make or give any representation or warranty in respect of the property.



ULSTERPROPERTYSALES.CO.UK

ANDERSONSTOWN
028 9060 5200

BALLYNAHINCH
028 9756 1155

CAUSEWAY COAST
0800 644 4432

FORESTSIDE
028 9064 1264

NEWTOWNARDS
028 9181 1444

BALLYHACKAMORE
028 9047 1515

BANGOR
028 9127 1185

CAVEHILL
028 9072 9270

GLENGORMLEY
028 9083 3295

RENTAL DIVISION
028 9070 1000

BALLYMENA
028 2565 7700

CARRICKFERGUS
028 9336 5986

DOWNPATRICK
028 4461 4101

MALONE
028 9066 1929



John McLarnon trading under licence as Ulster Property Sales (Cavehill)
@Ulster Property Sales is a Registered Trademark