

**10 Mayfield Road  
 Hightown Road, Newtownabbey, BT36 7WE**

**Offers Over  
 £199,950**

We are delighted to offer for sale this extremely well presented semi bungalow which is located in a very popular development just off the Hightown Road and will suit a variety of purchaser.

Inside the accommodation comprises; tiled entrance hall, lounge with feature hole in wall fireplace and multi fuel burning stove, modern fitted kitchen / diner with built oven & hob and PVC double glazed double doors to rear. Also on the ground floor is bedroom 2 and a modern shower room.

Upstairs is a spacious master bedroom with built in wardrobes and an luxury ensuite shower room.

Other benefits include PVC double glazing and gas heating

Outside there is a tarmac driveway for ample parking, garden to front in lawn, garden to side in lawn with paved patio area and feature raised decking area to rear.

Early viewing recommended !!

# 10 Mayfield Road

## Hightown Road, Newtownabbey, BT36 7WE



- Semi Detached Bungalow
- Modern Kitchen / Diner
- Gas Heating
- 2 Bedrooms Master Ensuite
- Modern Shower Room
- Driveway & Gardens
- Lounge
- PVC Double Glazing

### ACCOMMODATION COMPRISES

#### ENTRANCE HALL

Double glazed front door, tiled floor, modern vertical radiator

#### LOUNGE

18'3" x 12'7" at widest (5.56m" x 3.84m" at widest )

Feature hole in wall style fireplace with multi fuel burning stove, slate hearth, wood laminate flooring, two modern vertical radiator

#### KITCHEN / DINER

20'0" x 9'2" (6.10m" x 2.79m" )

Modern range of high and low level units, formica worktop, stainless steel single drainer sink unit, built in stainless steel oven, stainless steel

microwave, stainless steel gas hob, **BEDROOM 1**

stainless steel extractor fan, fridge / freezer space, plumbed for washing eaves storage

machine, tumble dryer space, partly tiled walls, tiled floor, modern vertical radiator, pvc double glazed door to rear

#### BEDROOM 2

11'1" x 6'11" (3.38m" x 2.11m" )

Radiator

#### SHOWER ROOM

Walk in shower area, thermostatic shower, screen, floating vanity unit, low flush wc, tiled floor, modern vertical radiator

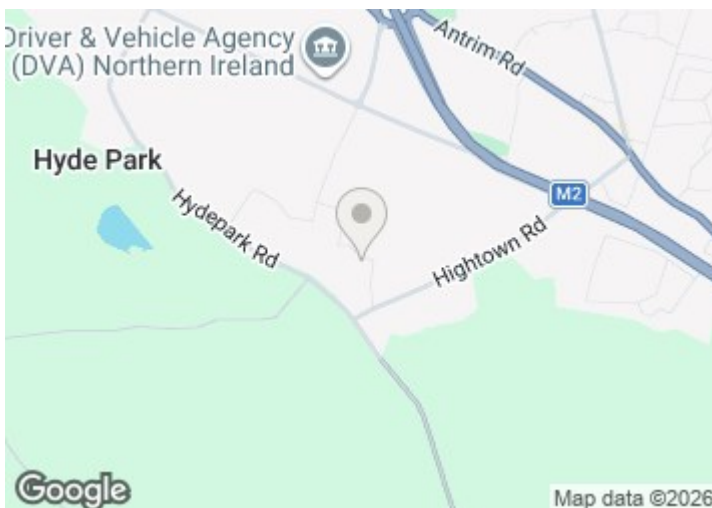
#### FIRST FLOOR

#### ENSUITE

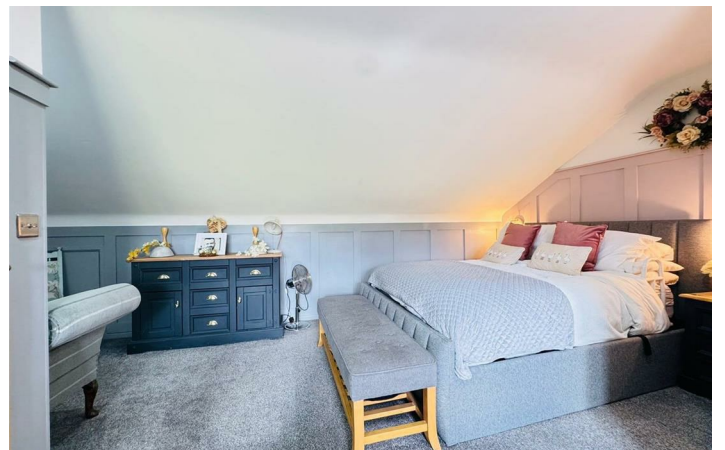
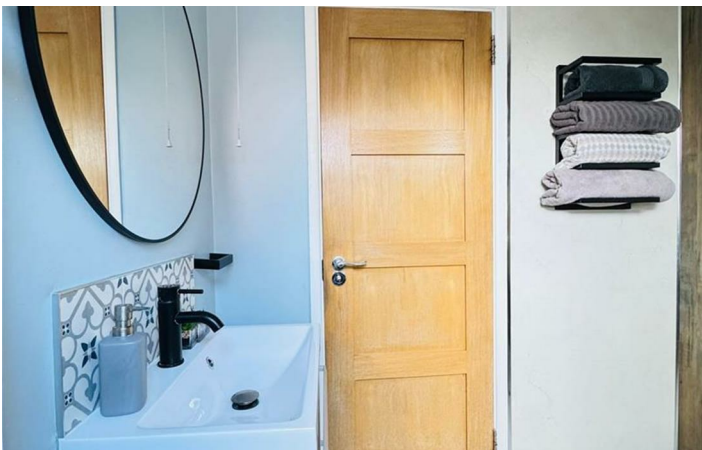
Shower cubicle, thermostatic shower, feature wash hand basin on storage unit, low flush wc, partly tiled walls, chrome heated towel radiator

#### OUTSIDE

Tarmac driveway for ample parking  
Garden to front in lawn  
Garden to side in lawn with paved patio area  
Feature raised decking area to rear



Energy Efficiency Rating		
	Current	Potential
Very energy efficient - lower running costs		
(92 plus) <b>A</b>		
(81-91) <b>B</b>		
(69-80) <b>C</b>	75	80
(55-68) <b>D</b>		
(39-54) <b>E</b>		
(21-38) <b>F</b>		
(1-20) <b>G</b>		
Not energy efficient - higher running costs		
<b>Northern Ireland</b>	EU Directive 2002/91/EC	



**\*\*Please note that the any services, heating systems or appliances have not been tested, and no warranty can be given or implied as to their working order\*\***

Questions you may have.

**WHICH MORTGAGE WILL SUIT ME BEST?**

**HOW MUCH DEPOSIT WITH I NEED?**

**WHAT ARE MY MONTHLY REPAYMENTS GOING TO BE?**

To answer these and other mortgage related questions contact 02890833295. Your home may be repossessed if you do not keep up your repayments on your mortgage.

UPS Financial Services Limited is an Appointed Representative of Stonebridge Mortgage Solutions Ltd, which is authorised and regulated by the Financial Conduct Authority, Registered Business Address:

UPS Financial Services LTD, 132 Great Victoria Street, Belfast, Co Antrim, N Ireland, BT2 7BG | Company Number NI621521 | Registered in Northern Ireland

H110837

ULSTERPROPERTYSALES.CO.UK

**ANDERSONSTOWN**  
028 9060 5200

**BALLYHACKAMORE**  
028 9047 1515

**BALLYNAHINCH**  
028 9756 1155

**BANGOR**  
028 9127 1185

**CARRICKFERGUS**  
028 9336 5986

**CAVEHILL**  
028 9072 9270

**DONAGHADEE**  
028 9188 8000

**DOWNPATRICK**  
028 4461 4101

**FORESTSIDE**  
028 9064 1264

**GLENGORMLEY**  
028 9083 3295

**MALONE**  
028 9066 1929

**NEWTOWNARDS**  
028 9181 1444

**RENTAL DIVISION**  
028 9070 1000

